



[www.alfatronelectronics.com](http://www.alfatronelectronics.com)

ALFATRON ELECTRONICS GmbH GERMANY

ALF-CMW101 and CMW102 Full HD Camera  
with wireless speaker microphone  
User Manual



# Content

<b>Legal Statement</b> .....	01
<b>Preface</b> .....	03
<b>Safety Precautions</b> .....	04
<b>1 Product Overview</b> .....	04
1.1 Production Introduction .....	05
1.2 Features .....	05
1.3 Package list .....	06
1.4 Component description .....	07
<b>2 Connection</b> .....	08
<b>3 Operating Description</b> .....	09
<b>4 Specification</b> .....	12
<b>5 Warranty</b> .....	13

## Legal Statement



### FCC Statement

Changes or modifications not expressly approved by the party responsible for compliance could void the user's authority to operate the equipment.

This equipment has been tested and found to comply with the limits for a Class B digital device, pursuant to Part 15 of the FCC Rules. These limits are designed to provide reasonable protection against harmful interference in a residential installation. This equipment generates uses and can radiate radio frequency energy and, if not installed and used in accordance with the instructions, may cause harmful interference to radio communications.

However, there is no guarantee that interference will not occur in a particular installation. If this equipment does cause harmful interference to radio or television reception, which can be determined by turning the equipment off and on, the user is encouraged to try to correct the interference by one or more of the following measures:

- Reorient or relocate the receiving antenna.
- Increase the separation between the equipment and receiver.
- Connect the equipment into an outlet on a circuit different from that to which the receiver is connected.
- Consult the dealer or an experienced radio/TV technician for help

This device complies with part 15 of the FCC rules. Operation is subject to the following two conditions (1) this device may not cause harmful interference, and (2) this device must accept any interference received, including interference that may cause undesired operation and after change.

### **Radiation Exposure**

This equipment complies with FCC radiation exposure limits set forth for an uncontrolled environment.

This device complies with Industry Canada license-exempt RSS standard(s). Operation is subject to the following two conditions:

- (1) this device may not cause interference, and
- (2) this device must accept any interference, including interference that may cause undesired operation of the device.

"Le présent appareil est conforme aux CNR d'Industrie Canada applicables aux appareils radio exempts de licence. L'exploitation est autorisée aux deux conditions suivantes :

- (1) l'appareil ne doit pas produire de brouillage, et
- (2) l'utilisateur de l'appareil doit accepter tout brouillage radioélectrique subi, même si le brouillage est susceptible d'en compromettre le fonctionnement."

**Radiation Exposure:**

This equipment complies with IC radiation exposure limits set forth for an uncontrolled environment.

Déclaration d'exposition aux radiations: Cet équipement est conforme aux limites d'exposition aux rayonnements IC établies pour un environnement non contrôlé.



Do not dispose of this product with the normal household waste at the end of its life cycle. Return it to a collection point for the recycling of electrical and electronic devices. This is indicated by the symbol on the product, user manual or packaging

The materials are reusable according to their markings. By reusing, recycling or other forms of utilization of old devices you make an important contribution to the protection of our environment.

Please contact your local authorities for details about collection points.









## Preface

### Overview

This document describes in detail the quick configuration of the Alfatron ALF-CMW101 and 102 series.

### Symbol Conventions

For the purpose of this document, the following signs that may exist herein mean as below:

Symbol	Description
 Danger	Danger indicates an imminently hazardous situation which, if not avoided, will result in death or serious injury.
 Warning	Warning indicates moderately or lowly hazardous situation which, if not avoided, will result in minor or moderate injury.
 Caution	Caution alerts you to possible equipment damage, data loss, performance degradation or unpredictable results if you do not follow instructions.
 Anti -static	Alert you to static-sensitive equipment.
 Protection Against Electric Shock	Alert you to high voltage.
 Laser Radiation	Alert you to intense laser radiation.
 Tip	Help you with solving a problem or saving your time.
 Note	Additional information for the main body, which can be known as an emphasis and supplement to the main body.

## Safety Precautions

Before using the product, read and abide by the following requirements to prevent damage to the product or your belongings.

### **Caution**

- Transport, use, and store the product only under the appropriate temperatures and humidity.
- Install the product in a well-ventilated place and do not block the device's air vents.
- Install the product in a steady place.
- Do not place the product in damp, dusty, or smoky areas.
- Do not place the product in direct sun light or near a heat source.
- Do not let the product come in contact with liquids.
- Do not disassemble the product at will.

### **Warning**

- Turn off all power sources when opening the device cover or when repairing the device to prevent electric shock.
- Use a new battery of the same kind to replace the old one.
- Use the recommended power cord and use it within its rated specifications.
- If a power plug or appliance coupler is used as a disconnecting device, please ensure that the disconnecting device is always easy to operate.

## **Important Statements**

- The physical product shall prevail while this User Manual is for reference only.
- The product will automatically update itself. If there is an upgrade, no notifications will be given.
- For the latest procedure and supplementary documentation, please contact the service center.
- Should there be any doubts or any disputes over the product instructions, the company reserves the rights of final interpretation.

## Product Overview

### 1.1 Product Introduction





Alfatron ALF-CMW101/102 is an audio-video conference camera, configured with 120 ° field of view, 1080P HD webcam and 2.4 GHz wireless speaker microphone, suitable for small and medium-sized conference scenes, personal business, home or leisure place.

### 1.2 Features

- 1080P HD camera  
120° Field of view, clear and fluid picture
- Mechanical adjustable lens  
The lens can be adjusted vertical -30 to 30 degree and horizontally -150 to 150 degree, enabling flexible shooting angle
- Audio and video integration  
Supporting Skype, WeChat, MSN and other online communication software
- Intelligent audio high-tech  
360-degree mic coverage  
256ms acoustic echo cancellation  
Full duplex  
Dynamic Noise Reduction (DNR)
- Portable external microphone and speaker

### 1.3 Package list

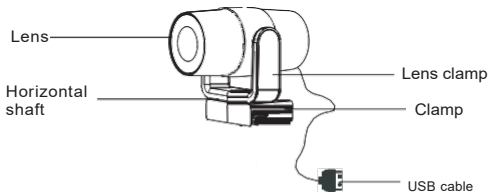
Please check whether the materials are complete according to the following table when opening the box.

No	Name	Picture	Pcs	Function Description
1	Camera		1	Conference shooting Pickup and display conference audio
2	Speaker-phone		1	
4	USB cable		1	Speakerphone charging cable
5	Charger		1	Speakerphone charger
6	User manual		1	Help users to install, connect, and use video terminal devices

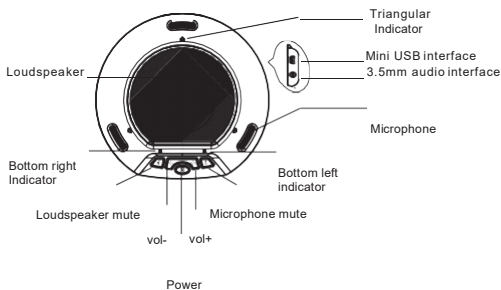


## Component description

### Part 1: HD network camera



### Part 2: 2.4G wireless speakerphone

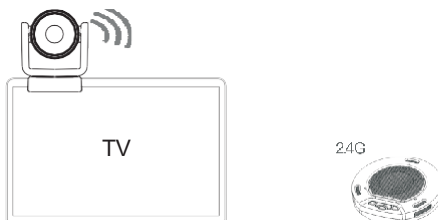


### LED Indicator

- Blue triangular Indicator: normal working status
- Blue bottom right indicator: loudspeaker mute
- Blue bottom left indicator: microphone mute
- Blinking blue bottom left indicator: volume adjustment
- Blinking orange bottom left indicator: low power

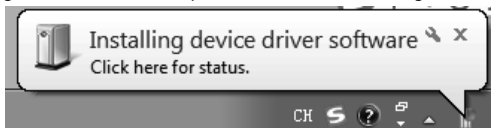
## Connection

Connect HD camera to a PC and long press the power button on the speaker microphone, long press again to power off.

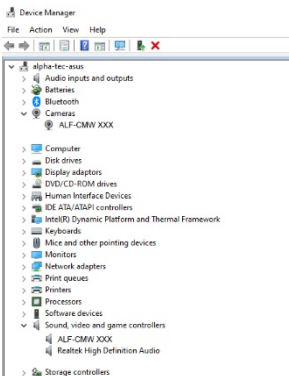
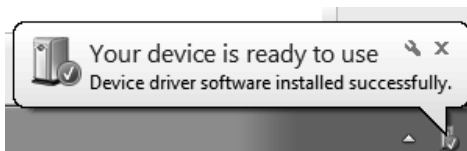


## Operating Description

- Connecting USB cable to a computer, the following prompt will appear in the lower right corner of the computer when first time using.

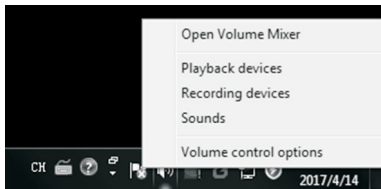


- When the device driver is installed successfully, the following prompt will appear on the computer side



- If you need to confirm whether the equipment has installed successfully, in "computer properties" - click on the "device manager" - click on the "image equipment" ALF-CMW XXX will appear in the device list.

Another way to check whether CMW101/102 is being used on the computer, click the " speaker " icon, and then it will show as following :



- Click " audio device " or " display devices ", and then it will show :

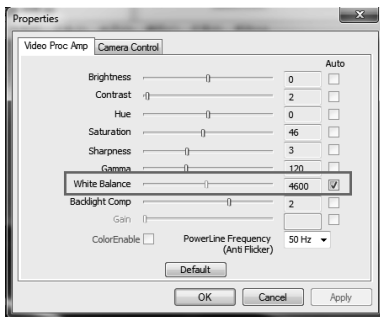


- Check whether the default device is CMW101/102, if not, select it as the default one and then it can work as normal.

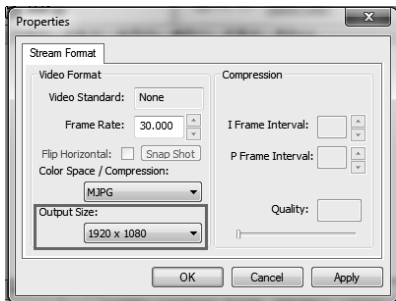
\*\*This operation will work under Win 7 and there will be some differences in other operating systems. This document can be used as a reference. \*\*

- If the color and resolution of video are found to be abnormal, you can use the camera adjustment software called "Amcap" to make adjustments. Check the output size, white balance and video for the corresponding values.

Check the white balance option with a default value of 4600



Video output size, select 1920\*1080



Or change the camera to "restore the default effect" in instant messaging software.

## Specification

Specification	Description
Dimension	Camera:104* 139* 124mm Speakerphone:155*148*37mm
Net weight	Camera:500g Speakerphone:337g
Color	Black
Interface	USB 2.0
Battery(speakerphone)	Built-in lithium battery (7-10H)
Lens	1/2.8, fixed focus, 120° Angle
Sensor	Full HD CMOS sensor
Voice pickup range	3m max
Video	1920*1080
Image transmission speed	Up to 30FPS
Aperture coefficient	F2.0
Focus distance	30~300CM (Better distance)
Computer system	Windows ® 7, 10 / Mac OS X 8.1 or 10.7 or higher operating system, etc.
Recommended conditions	Humidity: 20~85% condensation free Noise level: <48dB Storage temperature: -10° ~55° Reverberation time:<0.5 seconds
Certification	CE/FCC

## Warranty

### **1. Limited warranty in respect of Alfatron Products**

1.1 This limited warranty covers defects in materials and workmanship in this product.

1.2 Should warranty service be required, proof of purchase must be presented to the Company. The serial number on the product must be clearly visible and not have been tampered with in any way whatsoever.

1.3 This limited warranty does not cover any damage, deterioration or malfunction resulting from any alteration, modification, improper or unreasonably use or maintenance, misuse, abuse, accident, neglect, exposure to excess moisture, fire, improper packing and shipping (such claims must be presented to the carrier), lightning, power surges, or other acts of nature. This limited warranty does not cover any damage, deterioration or malfunction resulting from the installation or removal of this product from any installation, any unauthorized tampering with this product, any repairs attempted by anyone unauthorized by the Company to make such repairs, or any other cause which does not relate directly to a defect in materials and/or workmanship of this product. This limited warranty does not cover equipment enclosures, cables or accessories used in conjunction with this product.

This limited warranty does not cover the cost of normal maintenance. Failure of the product due to insufficient or improper maintenance is not covered.

1.4 The Company does not warrant that the product covered hereby, including, without limitation, the technology and/or integrated circuit(s) included in the product, will not become obsolete or that such items are or will remain compatible with any other product or technology with which the product may be used.

1.5 Only the original purchaser of this product is covered under this limited warranty. This limited warranty is not transferable to subsequent purchasers or owners of this product.

1.6 Unless otherwise specified, the goods are warranted in accordance with the manufacturer's product specific warranties against any defect attributable to faulty workmanship or materials, fair wear and tear being excluded.

1.7 This limited warranty only covers the cost of faulty goods and does not include the cost of labour and travel to return the goods to the Company's premises.

1.8 In the event of any improper maintenance, repair or service being carried out by any third persons during the warranty period without the Company's written authorization, the limited warranty shall be void.

1.9 A 7 (seven) year limited warranty is given on the aforesaid product where used correctly according to the Company's instructions, and only with the use of the Company's components.

1.10 The Company will, at its sole option, provide one of the following three remedies to whatever extent it shall deem necessary to satisfy a proper claim under this limited warranty:

1.10.1 Elect to repair or facilitate the repair of any defective parts within a reasonable period of time, free of any charge for the necessary parts and labour to complete the repair and restore this product to its proper operating condition.; or

1.10.2 Replace this product with a direct replacement or with a similar product deemed by the Company to perform substantially the same function as the original product; or

1.10.3 Issue a refund of the original purchase price less depreciation to be determined based on the age of the product at the time remedy is sought under this limited warranty.

1.11 The Company is not obligated to provide the Customer with a substitute unit during the limited warranty period or at any time thereafter.

1.12 If this product is returned to the Company this product must be insured during shipment, with the insurance and shipping charges prepaid by the Customer. If this product is returned uninsured, the Customer assumes all risks of loss or damage during shipment. The Company will not be responsible for any costs related to the removal or re-installation of this product from or into any installation. The Company will not be responsible for any costs related to any setting up this product, any adjustment of user controls or any programming required for a specific installation of this product.

1.13 Please be aware that the Company's products and components have not been tested with competitor's products and therefore the Company cannot warrant products and/or components used in conjunction with competitor's products.

1.14 The appropriateness of the goods for the purpose intended is only warranted to the extent that the goods are used in accordance with the Company's installation, classification and usage instructions.

1.15 Any claim by the Customer which is based on any defect in the quality or condition of the goods or their failure to correspond with specification shall be notified in writing to the Company within 7 days of deliver or (where the defect or failure was not apparent on reasonable inspection by the Customer) within a reasonable time after discovery of the defect or failure, but, in any event, within 6 months of delivery.

1.16 If delivery is not refused, and the Customer does not notify the Company accordingly, the Customer may not reject the goods and the Company shall have no liability and the Customer shall pay the price as if the goods had been delivered in accordance with the Agreement.

**1.17 THE MAXIMUM LIABILITY OF THE COMPANY UNDER THIS LIMITED WARRANTY SHALL NOT EXCEED THE ACTUAL PURCHASE PRICE PAID FOR THE PRODUCT.**